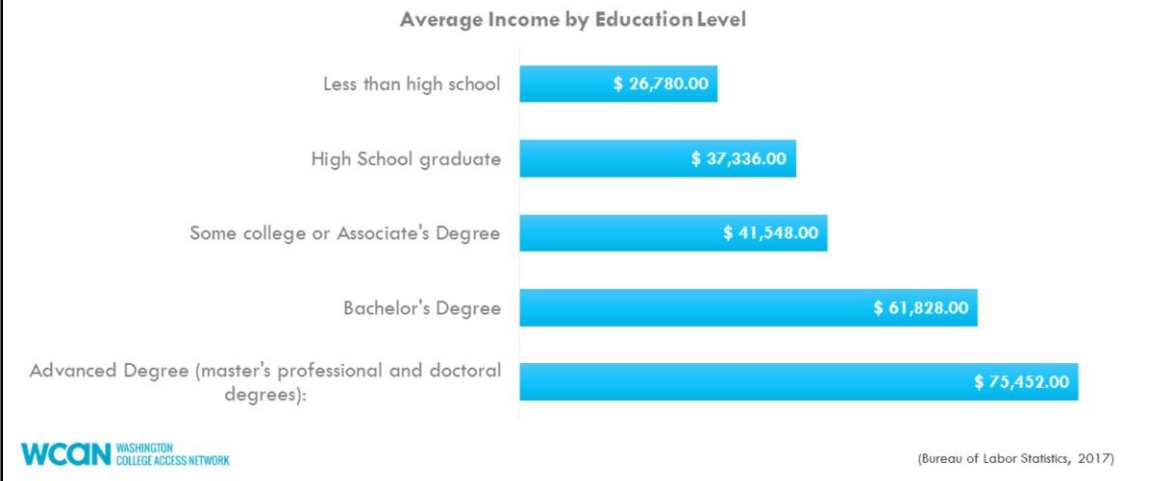


Middle School Counselor College Bound Basics



Benefits of Going to College



As I am sure that many of you know, a college degree or certification will help students get a higher paying job faster. As you can see from this chart, the more education a student receives the higher their income rises, so pursuing a postsecondary degree or certification may be one of the most important choices and most influential decisions a student can make.

Additionally, we know that WA has one of the fastest growing economies in the US. According a Washington Round Table 2016 report, there will be 740,000 job openings in WA in the next 5 years, of which we can assume many will require at least some education beyond high school.

So, the question is - how do we prepare for the future in our state and how do we make sure that our most vulnerable populations of students are able to take advantage of the workforce landscape of our state?

Enter: Early Promise Commitment



That's where the College Bound Scholarship comes into play and why your partnership in helping signing-up students for this scholarship is so pivotal.

Currently, there are over 250,000 College Bound Scholarship students in the program. To give that some scale, that's enough people to completely fill the Seahawks stadium 3 times over. Yet, despite that huge number, we also know that more than $\frac{1}{4}$ of eligible students **ARE STILL** missing the opportunity to apply for College Bound.

(<http://www.wsac.wa.gov/sites/default/files/2017.CBS.Report.pdf>).

Additionally, we know that CBS students graduate from high school at 12 percentage points higher than their low-income peers and 64% of students in 2014 directly enrolled in college compared to 61% of all students statewide.

So, if you look at the results thus far - this program is inspiring and encouraging WA students from low-income families to not only graduate from high school BUT to continue their education BEYOND high school.

Ok - so, what is College Bound? And what does it provide students?



What is the Commitment?

The commitment covers the cost of tuition at public rates, some fees and a small book allowance will be covered by state financial aid.

College Bound works in combination with other state financial aid (such as **State Need Grant**) to cover a student's costs for college.

The diagram features a central logo for the College Bound Scholarship Washington, which consists of an orange star and the text 'College Bound Scholarship WASHINGTON'. To the left of the logo is a large, dark red arrow pointing right, containing the text 'College Bound works in combination with other state financial aid (such as **State Need Grant**) to cover a student's costs for college.' To the right of the logo is a large, dark blue arrow pointing left, containing the text 'Actual amounts for the College Bound Award are based on the type of college the student attends and their tuition rate.'



Actual amounts for the College Bound Award are based on the type of college the student attends and their tuition rate.

What is the Commitment?

One of the most important aspects of College Bound is what the funds are able to cover for a student. College Bound was designed to support students with financial aid to cover the costs of tuition at public rates, some fees and a small book allowance.

No one student's College Bound Award will look like another's and that is because their award is determined by their need. Just like any other financial aid award, it is dependent of the type of college, the cost of attendance and the student's financial aid application. If a student has any questions about their award they should contact the financial aid office at their college. You can encourage students to review their financial aid award and see if their costs are covered by state financial aid as well.

College Bound is a commitment to an eligible student's funds for tuition at public rates, some fees and a small book allowance.

- Works in combination with other state financial aid to cover the above costs

for college

- The rates of the College Bound Award are determined by the type of college the student attends and their FAFSA or WASFA



How the Application Process Works





What is The College Bound Scholarship?



Early **commitment** of state financial aid to eligible 7th **and** 8th grade students who apply by June 30th of 8th grade.



Combines with other state financial aid to cover the average cost of tuition (at comparable public college rates), some fees, and a small book allowance = **commitment**.



Can be used at over **60** two- and four-year public and private colleges and universities.

College Bound is a commitment of state financial aid designed to provide low income students the access to higher education where their financial status may prevent them from attending a college post high school. Eligibility for step one can be determined in a few ways.



Who is Eligible?

Students must meet one of the following requirements during 7th **OR** 8th grade.

Family income meets the minimum on the USDA Chart.

Student is a foster youth, at any point in time between grade 7 and age 21.

Student's family receives TANF benefits.

Who is eligible?

Students must meet one of these requirements

Family's income meets the requirements per the USDA Chart that is used for Free and Reduced Price Lunch (FRPL) eligibility. IT is posted online on the College Bound Website for students and their families to see

Student is a foster youth, at any point from grade 7 through age 21

Student's family receives TANF benefits

For questions regarding special circumstances such as kinship caregivers, homeless youth, etc. please contact WSAC.



Eligibility: A Two-Step Application Process

Step One

- Apply in 7th or 8th grade, by June 30 of 8th grade year (foster youth are auto-enrolled).
- Meet income requirements; verified on the application.
- Foster Youth are auto-enrolled if they are in care at any point in time from grade 7 to age 21



Step Two

- Fulfill the College Bound Pledge.
- Meet income requirements; verified by the college using information from FAFSA or WASFA.
- Be accepted to and attend an eligible college within one year of graduating high school.

It's important to know that when applying for the College Bound Scholarship it is done in two parts. Students will start and complete an application while they are in middle school, but then will have to complete the process when they meet the pledge and apply for college admission and enroll into one of the over 60 colleges in Washington state.

It's important to note that the application is started either by the student's family, or by a school staff member and then completed when a Missing Information Letter (MIL) is signed by both the student and the parent by June 30th of the student's 8th grade year.



The Pledge

- ✓ • Graduate from a Washington State high school with a 2.0 GPA or better.
- ✓ • Have no felony convictions.
- ✓ • Be income eligible, determined by the college with information from the FAFSA or WASFA.
- ✓ • Enroll in college within one year of high school graduation.

In order for students to be able to access the College Bound Scholarship after they complete their application in middle school, they have to meet the pledge requirements. As a whole these requirements are meant to encourage students to challenge themselves and take rigorous courses, and be successful.

As College Bound students should apply for financial aid as soon as possible. Both the FAFSA and WASFA applications open on October 1st. While the funds from CBS are guaranteed, state need grant and other financial aid opportunities are on a first come first serve basis, so the earlier they apply the better.

Students should know that for financial aid it is the Rule of ONE, meaning students should not apply with both FAFSA and WASFA, they only need to complete ONE application. Students who are US citizens, or permanent residents should fill out the FAFSA and DREAMers, Undocumented students or non-citizen students should complete the WASFA to apply for state financial aid. Be aware that state financial aid programs have residency and additional program requirements.

Once CBS students apply for financial aid, their College Bound Application will

match with their financial aid application. A student will be notified by email. So be sure to encourage students to check their email frequently, if they do not receive the email have them contact WSAC and verify that their application was matched and update their contact information.



Maintaining Eligibility



- Must enroll in college within one year of high school graduation.



- Must be used within five year of HS graduation (Class of 2017's CB scholarship expires in 2022).



- Remain "in good standing" with your college to maintain scholarship (GPA, honor code, etc.).



- File the FAFSA or WASFA early every year in college.

Speaker: Ineligible one year? File the next year - Income eligibility assessed each year of college.

In order for students to be able to access the College Bound Scholarship after they complete their application in middle school, they have to meet the pledge requirements. As a whole these requirements are meant to encourage students to challenge themselves and take rigorous courses, and be successful.

As College Bound students should apply for financial aid as soon as possible. Both the FAFSA and WASFA applications open on October 1st. While the funds from CBS are guaranteed, state need grant and other financial aid opportunities are on a first come first serve basis, so the earlier they apply the better.

Students should know that for financial aid it is the Rule of ONE, meaning students should not apply with both FAFSA and WASFA, they only need to complete ONE application. Students who are US citizens, or permanent residents should fill out the FAFSA and DREAMers, Undocumented students or non-citizen students should complete the WASFA to apply for state financial aid. Be aware that state financial aid programs have residency and additional

program requirements.

Once CBS students apply for financial aid, their College Bound Application will match with their financial aid application. A student will be notified by email. So be sure to encourage students to check their email frequently, if they do not receive the email have them contact WSAC and verify that their application was matched and update their contact information.

How We Work Together

The Washington Student Achievement Council

Administers the college bound scholarship and maintains College Bound Portal



College Bound
Scholarship
WASHINGTON



The Washington College Access Network

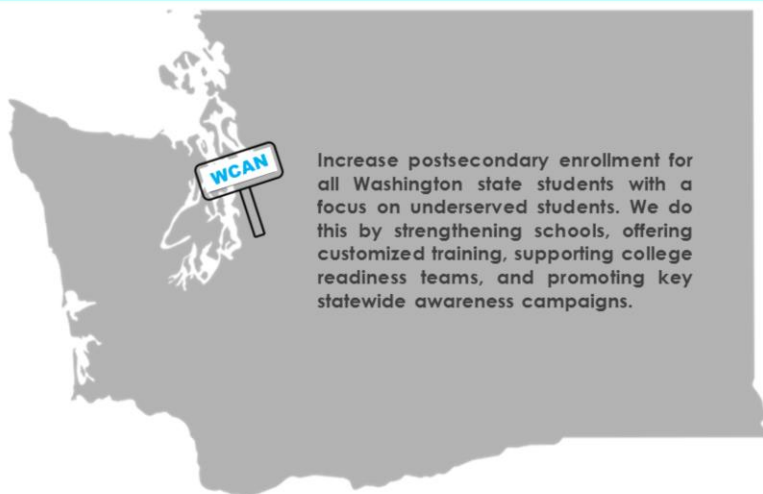
Leads College Bound statewide outreach

Image: Hand by AliWijaya from the Noun Project

Washington Student Achievement Council is responsible for administering the College Bound Scholarship. This entails application processing and facilitation for students in Washington.

Washington College Access Network provides outreach for the College Bound Scholarship by utilizing regional officers to be close to schools, districts, education service districts and students to provide access to College Bound.

OUR MISSION



Working Directly with You



Train staff to engage students in early college awareness



Develop support teams



Utilize College Bound sign-ups as an intervention strategy

wcan WASHINGTON
COLLEGE ACCESS NETWORK

In order to support your sign-up efforts we offer regional, school-based and personalized training on the College Bound Scholarship, the applications process, and help you and your team implement strategies that will maximize sign-up numbers that help to ensure that eligible students won't miss out on this opportunity.

We know that this work shouldn't be done alone, so we frequently work with you to develop school-based teams or a "web-of-support" who will help implement sign-up activities, be knowledgeable about the scholarship and can serve as another point of contact (so its not just you answering questions and working out logistics!)

And finally, our team provides schools with ways in which to use the College Bound Scholarship as an intervention strategy for the most at-risk populations in your buildings.

(Provide example of intervention strategy that was successful in a local school)

Serving as Your Partner



Provide CBS outreach **support**



Highlight College Bound Scholarship
success to leadership



Help build a **college-going**
culture

We are here to offer you organizing and implementing support for College Bound outreach (Regional officer provide example).

By facilitating state-wide opportunities to implement college awareness events (college signing celebrations and using the college knowledge suite



WSAC Resources

MS Toolbox (College Bound Portal)

Online Application

Intro Flyer, available in 11 languages

Brochures, Posters and Swag!

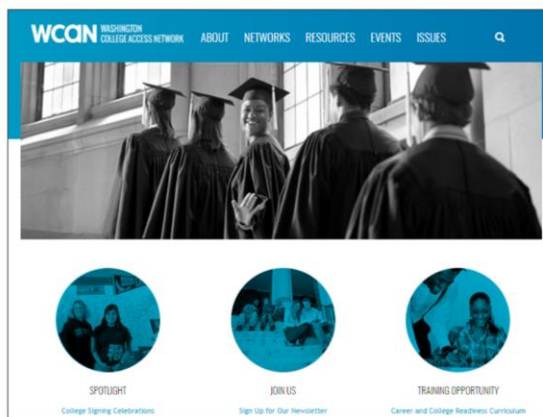
Counselor listserv

WCAN Resources

FREE ONLINE TOOLS

WCAN.ORG

- Downloadable College Bound Scholarship outreach timeline
- List of sample sign-up activities
- College Signing Celebration toolkit to lead an event at your school
- College Knowledge materials designed by students for students



WCAN WASHINGTON COLLEGE ACCESS NETWORK

Now that we have covered WSAC tools and supports, let's talk about how WCAN can support your sign-up and outreach efforts

- Download our "Steps To Sign-Up Success" timeline that is intended to help guide school staff on key activities and best practices to sign-up students
- We will be also be posting a list of sample activities that you may consider hosting to help recruit students for the scholarship. All activities have been crowdsourced from schools across the state and have been proven to work!
- Last year, during the spring, we noticed a number of middle schools bringing their students to the local high school's College Signing Day which seems to help continue to build a college going culture for students. These schools also rolled in last-push sign-up efforts in conjunction with these events happening around the state. This year, we are leveraging that momentum from last year and providing middle schools with the toolkit to lead a college signing event at your school.
- Finally, we just released our College Knowledge project materials online. Each handout tackles a specific subtopic and can be used flexibly as an additional student resource to compliment any college and career programming. You can download and print one handout at a time, download all 23 handouts as a comprehensive "handbook" for students or download by

chapter to give students a robust set of materials on a single topic.



The College Bound Portal: MS Toolbox

Start an app

- Upload eligible students (FRPL lists)
- October recommended for first upload

Update

- Student look up tool
- Application history
- Update student info
- Downloadable lists

Complete the sign-up

- Search
- Print Missing Information Letters (MIL) for signature and income verification

Online app and upload starts app for student

To complete, per legislation, students and a parent have to self-certify and wet sign an app.



How WSAC Can Support You

Promote

- Brochures, posters, & flyer in 11 languages
- Swag: pens, pencils and bracelets

Follow-up

- MILs are sent twice a year to families and weekly in the summer
- MIL batches are sent three times a year to schools

Correspond

- Fall
 - Welcome packet to counselors; annual reports to superintendents
- Spring
 - Alert letter to superintendent when rate is less than state average

Access the Portal

- Get help with anything from sign-in to FAFSA completion



Contact Us!



College Bound
Scholarship
WASHINGTON

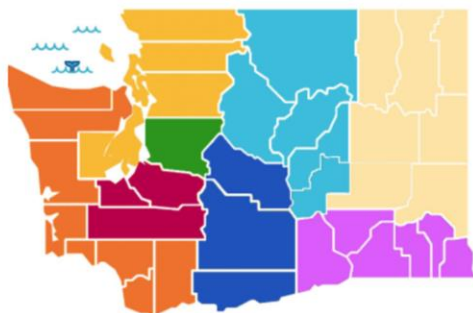
Email:

- Collegebound@wsac.wa.gov

Call:

- 1-888-535-0747, Option 1

Outreach Team



Our College Bound Regional Officers live and work in the areas that they serve to connect you with local resources and solutions that fit your school and your needs.

Visit <https://www.wcan.org/about/contact-us> to find contact information for the College Bound Regional Officer that works in your area.